

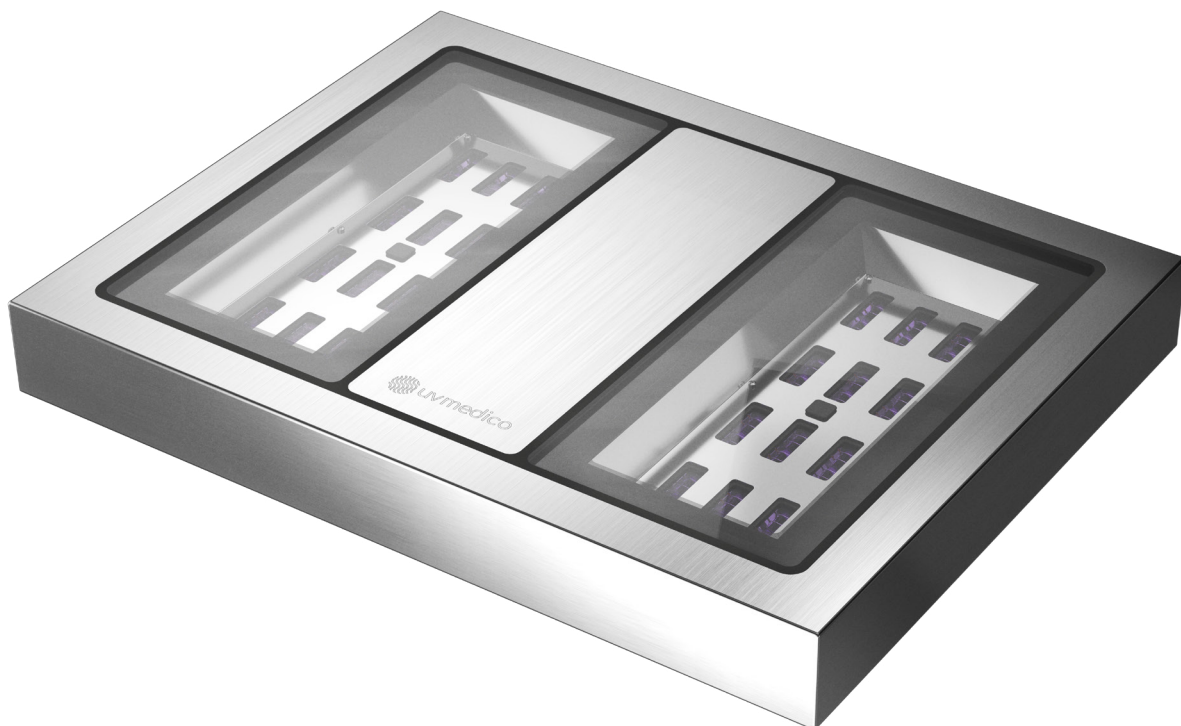
UV222 Step-On

UVM222-SO

Decontamination of cleanroom shoes | IP66

General product specifications

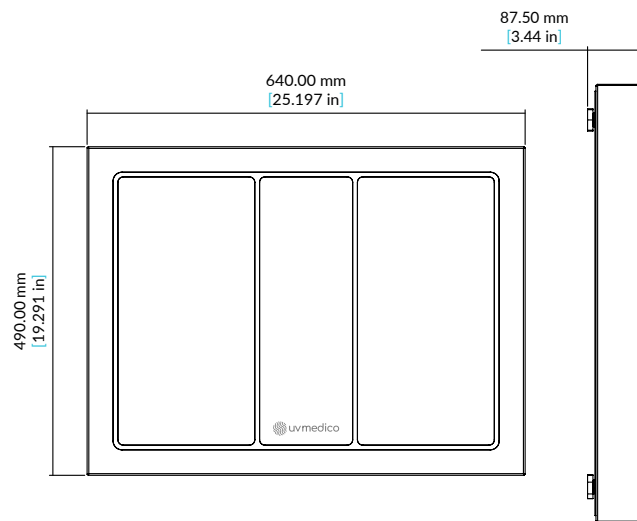
Light source	Krypton Chloride Excimer Lamp
Wavelength	222 nm
Output	620 mW (Typical)
Input voltage	100-240V AC 50/60 Hz
Mode (programmable)	With external on/off or when stepped on
Max power consumption	120 W
Weight	20 kg (44.1 lbs)
Dimensions	640 x 490 x 87.5 mm (25.2 x 19.3 x 3.44 in)
Power lead (PVC)	3 x 0.75 mm ² / 95 cm (18AWG / 3.11 ft)
Operating temperature	0° to + 50° C (32° to 122° F)
Ambient humidity	5-90% RH
Materials	316 stainless steel, quartz glas ¹



1. Chemically-inert, non-porous, transparent quartz glass with high-temperature resistance.

UV222 Step-On

Gallery:



In compliance with:

International Standard

ISO 15858	UV-C Devices – Safety information – permissible human exposure.
IEC 62471	Photobiological safety of lamps and lamp systems.
IEC PAS 63313 ED1	Position statement on germicidal UV-C irradiation - UV-C safety guidelines (see Global Lighting Association).

International Guidelines

ACGIH® (American Conference of Governmental Industrial Hygienists)	2021 and 2022 TLV (Threshold Limit Values) & BEI (Biological Exposure Indices) for chemical substances and physical agents.
--	---